

Getac

Windows®. Life without Walls™.
Getac recommends Windows 7.

Empower Your Mission

*Feature-rich Rugged Notebook
for Any Demanding Environment*

Getac B300
Fully Rugged Notebook



B300

Fully Rugged
Notebook



Long Battery Life



QuadraClear™ Technology



Night Vision



Backlit Keyboard



Fanless

- Industry-leading Getac QuadraClear™ Sunlight Readable Technology: Optional 1400 Nits LCD with Touchscreen
- Ultimate Performance with Intel® Core™ i7 vPro™ Processor
- Up to 11 Hours of Battery Lifeⁱⁱ
- MIL-STD-810G Certified and IP65 Certified
- MIL-STD-461F Certified
- Optional Salt Fog Compliance
- Optional Night Vision
- Optional UL1604 Class 1, Division 2, Group A, B, C, D



The B300 is a hard-as-nails road warrior designed to be productive and worry-free mobile computing, and it is fully customizable. It is MIL-STD-810G certified and IP65 certified, boasting: a magnesium alloy case, a shock-protected HDD, vibration and shock resistance, and sealed I/O caps and doors to prevent damage from solid particles and moisture. Equipped with low voltage Intel® Core™ i7-620LM vPro™ processor, B300 offers long battery life up to 11 hoursⁱⁱ for all day work.

The B300 embraces several advanced security features to safeguard important data, including a fingerprint scanner, TPM 1.2, Intel® vPro™ and an optional smart card reader. It also includes comprehensive connectivity options of Bluetooth, WLAN, GPS, and 3G.

B300 features an ultra-bright 13.3" QuadraClear™ sunlight readable display. The elective 1400 nits display solution leads the industry with an unmatched effective contrast ratio that makes the B300 the ideal choice for daylight viewing. The fan-less design of B300 eliminates the risk of failure and reduces down time under critical environments for stable operation.

Interface



Back Side

- DC in Jack x1
- USB 2.0 x 1
- Docking Connector x 1
- External VGA x 1
- Serial Port x 2



Left Side

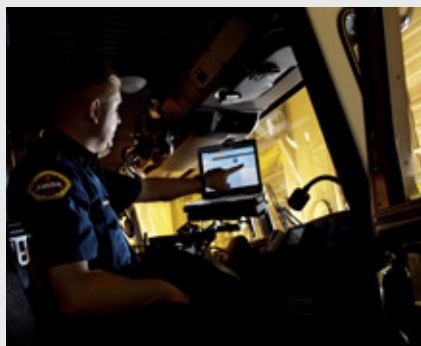
- Battery x 1
- Multimedia Bay x 1



Right Side

- HDD Drive x 1
- Expansion Card Slot x 2
- USB 2.0 x 1
- USB 2.0 / eSATA Combo x 1
- HDMI x 1
- IEEE 1394a x 1
- Multi-card Reader x 1
- Modem (RJ11) x 1
- LAN (RJ45) x1
- Audio Output x 1
- Microphone x 1
- External GPS Antenna Port (only with Optional GPS) x 1

Industry Applications



Public Safety

B300 is especially designed for rescuers, firefighters, ambulance crew, and policemen who spend prolonged periods of time inside a vehicle on missions. Unlike other fixed-mount models, its vehicle dock allows easy installation and removal, resulting in greater user mobility. The computer can be easily moved between the office space and the police car, fire truck, or other vehicles. Built-in Wi-Fi and 3G technology enable investigation report uploads and police database access anytime.



Military

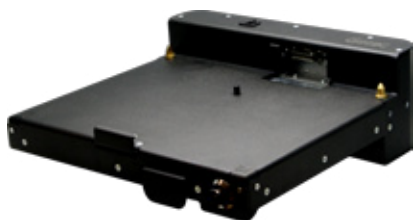
Featuring sunlight readable and night vision display, IP65 certified B300 is highly versatile and customizable to suit any kind of military environment – from battle array simulation in the glaring sunlight, night time shooting training in the wilds, military equipment management and maintenance, to vehicle diagnosis. B300 is a powerful and durable computer custom made for outdoor usage.



Professional Service

The IP65-certified, drop resistant B300 is a must for ecology scientists or environment surveyors working under various extreme humidity or temperatures. Its optional Salt Fog anticorrosion coating and special mechanical design also makes it ideal for navigation.

Optional Accessories



Vehicle Dock

W x D x H: 307.3 x 325.1 x 106.7mm
(12.1" x 12.8" x 4.2")

- USB 2.0 x 4
- LAN (RJ45) x 1
- Audio Output x 1
- Microphone x 1
- DC in Jack x 1
- External VGA x 1
- Serial Port x 2
- PS/2 x 2



Office Dock

W x D x H: 329 x 124.8 x 94mm
(13" x 4.9" x 3.7")

- USB 2.0 x 4
- LAN (RJ45) x 1
- Audio Output x 1
- Microphone x 1
- DC in Jack x 1
- External VGA x 1
- Serial Port x 2
- PS/2 x 2



Carry Bag



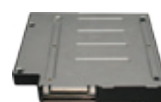
Battery Charger



Main Battery
(7800mAh)



Multimedia Bay
2nd battery (7800mAh)



Multimedia Bay
2nd HDD



AC Adapter
(90W, 100-240VAC)



Vehicle Adapter
(90W, 11-16VDC
and 22-32VDC)



MIL-STD-461F
Certified AC Adapter
(90W, 100-240VAC)



Stylus

Specifications

Operating System	Genuine Windows® 7 Professional Genuine Windows Vista® Business	Communication Interface	10/100/1000 base-T Ethernet 56K ITU V.92 modem Intel® Centrino® Ultimate-N 6300; 802.11 a/b/g/n Bluetooth (v2.1+EDR class 2) Optional GPS Optional Gobi™2000 mobile broadband
Mobile Computing Platform	Intel® Core™ i7 vPro™ Technology - Intel® Core i7-620LM vPro™ Processor 2.0GHz, Max. 2.80GHz with Intel® Turbo Boost Technology - 4MB L3 Intel® Smart Cache - Mobile Intel® QM57 Express chipset	Software	Getac Utility Adobe® Reader® Computrace® Compatible BIOS
VGA Controller	Intel® Graphics Media Accelerator HD ¹	Security Feature	Intel® vPro™ Technology TPM 1.2 Fingerprint scanner Optional smart card reader (occupies one PCMCIA type II slot) Kensington lock
Display	13.3" TFT LCD XGA (1024 x768) 700 nits display with optional touchscreen Optional 1400 nits QuadraClear™ sunlight readable display with touchscreen	Power	AC adapter (90W, 100-240VAC, 50 / 60Hz) Li-Ion smart battery (7800mAh) ⁱⁱ Optional Multimedia Bay 2nd Li-Ion smart battery (7800mAh)
Storage & Memory	2GB DDR3 expandable to 8GB SATA HDD 250GB / 320GB Optional SATA SSD 80GB / 160GB	Dimension (W x D x H) & Weight	303.5 x 263 x 60 mm (11.9" x 10.35" x 2.36"), 3.5 kg (7.7 lbs) ⁱⁱⁱ
Keyboard	Membrane keyboard Optional LED backlit membrane keyboard Optional LED backlit rubber keyboard	Rugged Feature	MIL-STD-810G certified and IP65 certified MIL-STD-461F certified ^{iv} Optional UL1604 Class 1, Division 2, Group A, B, C, D Full magnesium alloy case Shock-protected removable HDD Vibration & drop resistant Optional salt fog compliance Optional night vision
Pointing Device	Touchscreen - Optional pressure sensitive touchscreen Touchpad - Glide touchpad with scroll bar	Environmental Specification	Temperature: - Operating: -20°C to 60°C / -4°F to 140°F - Storage: -51°C to 71°C / -60°F to 160°F Humidity: - 95% RH , non-condensing
Expansion Slot	PCMCIA Type II x 1 + ExpressCard/54 x 1 Optional PCMCIA Type II x 1 + smart card reader x 1 Optional ExpressCard/54 x 1 + smart card reader x 1 2-in-1 memory card reader x 1		
Multimedia Bay	DVD super multi drive Optional 2nd battery Optional 2nd storage: HDD 250 / 320 GB; SSD 80 / 160 GB		
I/O Interface	Serial port (9-pin; D-sub) x 2 External VGA (15-pin; D-sub) x 1 Microphone (Mini-jack) x 1 Audio output (Mini-jack) x 1 DC in Jack x 1 USB 2.0 (4-pin) x 2 USB 2.0 / eSATA Combo x 1 Modem (RJ11) x 1 LAN (RJ45) x 1 IEEE 1394a x 1 HDMI x 1 External GPS antenna port (only with optional GPS) x 1 Docking connector (80-pin) x 1 Optional RF antenna pass-through for WLAN and WWAN		

- i Share memory size may be vary by different operating system and RAM size.
- ii Battery life testing conducted under BatteryMark 4.0.1. Battery performance will vary upon software applications, wireless settings, power management settings, LCD brightness, customized modules and environmental conditions. The battery has a limited number of charge cycles and may eventually need to be replaced by a Getac service provider. Battery life and charge cycles vary by use and settings.
- iii Weight varies from configurations and optional accessories.
- iv MIL-STD-461F 90W AC adapter sold separately.
- v Tested by a national independent third party test lab following MIL-STD-810G.



Getac EUROPE

Germany Office -
Getac Technology GmbH
Kanzlerstrasse 4
40472 Düsseldorf, Germany
Tel: +49 211 984 8190

Italy Office

Tel: +39 02 36539562

UK Office - Getac (UK) Ltd.

Mitac house, Nedge Hill, Telford,
Shropshire, TF3 3AH, U.K.
Tel: +44 1952 207 231

Getac NORTH AMERICA

USA Office - Getac Inc.

43 Tesla, Irvine, CA 92618, USA
Toll Free: +1 886 GO GETAC
(1 886 464 3822)

Getac ASIA

China Office - Getac Mobile Ltd.

- Kunshan Office:
Export Processing Zone, 269,
No.2 Dadao, Changjiang South Rd.,
Kunshan City, Jiangsu, China
Tel: +86 512 57382090
+86 512 57367777 # 5124

- Shanghai Office:

Room 122, Floor 2,
No.211 Jiangchang 3rd Rd.,
Zhabei District, Shanghai, China
Tel: +86 21 61431188 # 1032
Fax: +86 21 61401023

- Beijing Office:

Room 501, Haowei Building,
No.25 Beitai Pingzhuang Rd.,
Haidian District, Beijing, China
Tel: +86 10 62381104
+86 10 62381108 # 2040

Japan Office -

MiTAC Japan Corporation

Yasuda 8th Building 6F,
Kaigan 3-chome 3-8, Minato-ku,
Tokyo, 108-0022, Japan
Tel: +81 3 3769 8311 # 6411

Taiwan Office -

Getac Technology Corporation

5F, Building A, No. 209,
Section 1, Nangang Rd.,
Nangang Dist., Taipei City,
11568, Taiwan, R.O.C.
Tel: +886 2 2785 7888

SALES CONTACT

North America
ruggedsales@getac.com

South America
sales-getac-SAmerica@getac.com

EMEA
sales-getac-EMEA@getac.com

- Germany:
sales-getac-DACH@getac.com

- Italy:
sales-getac-Italy@getac.com

- UK:
sales-getac-UK@getac.com

Asia Pacific
sales-getac-APAC@getac.com

- China:
sales-getac-China@getac.com

- Japan:
sales-getac-Japan@getac.com

MARKETING CONTACT

Global
Globalmarketing@getac.com

North America
NorthAmericamarketing@getac.com

South America
SouthAmericamarketing@getac.com

EMEA
EMEAmarketing@getac.com

Asia Pacific
APACmarketing@getac.com

www.getac.com

Copyright © 2010 Getac Technology Corporation and/or any of its affiliates. All Rights Reserved.
V13M11Y10